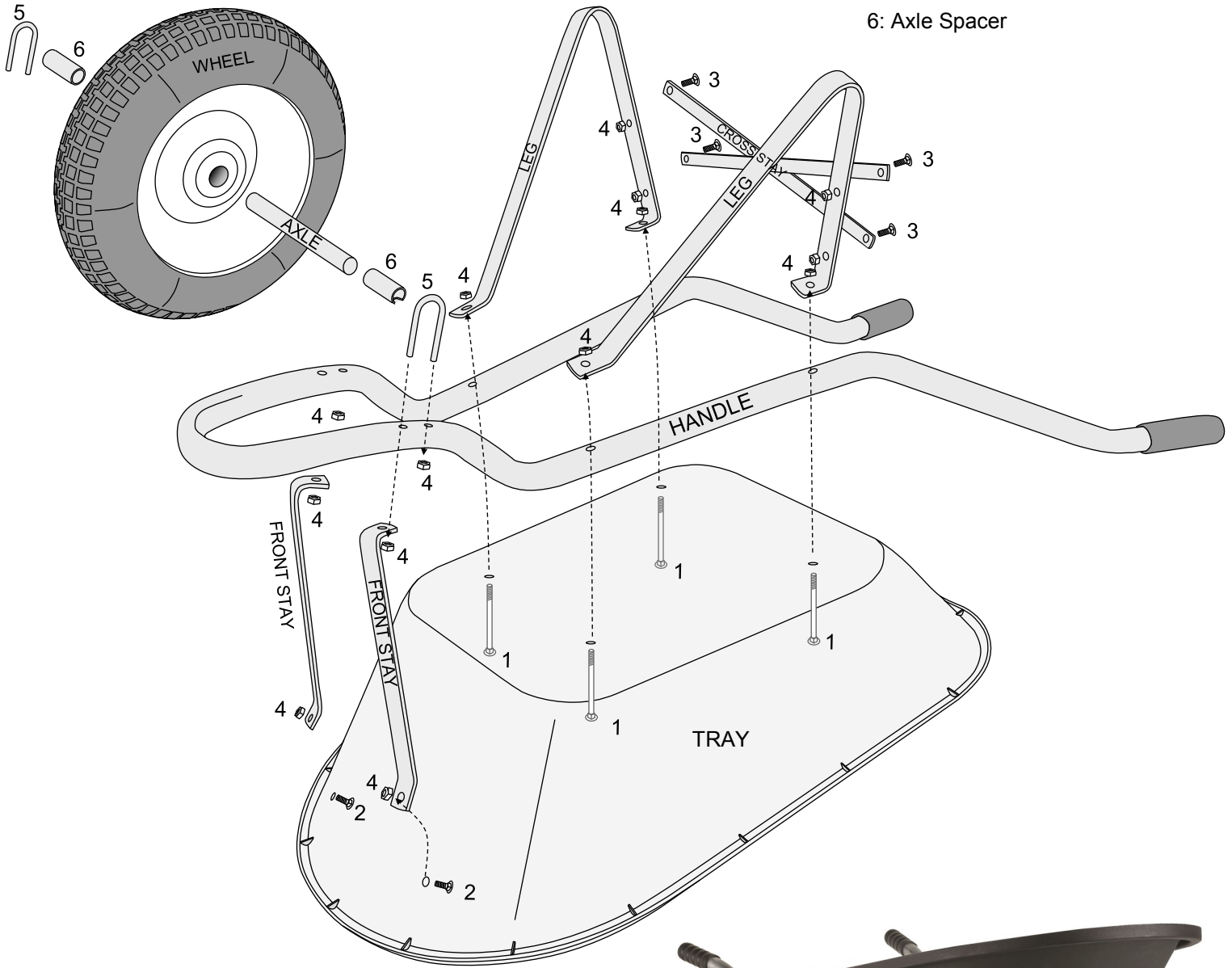


# POLY CONTRACTOR ASSEMBLY INSTRUCTIONS

- 1: M8 x 75mm Coach Bolt
- 2: M8 x 20mm Coach Bolt
- 3: M8 x Hex Bolt
- 4: M8 Hex Nut
- 5: M8 U-bolt
- 6: Axle Spacer



# POLY CONTRACTOR ASSEMBLY INSTRUCTIONS

**Important:** Only finger tighten nuts during assembly.

1. Place tray upside down on a bench.
2. Place the Coach Bolts Through the pre-drilled holes in the Tray, the four long coach bolts in the base of the tray and the two short coach bolts in the nose section of the tray and secure them in place. Position the handle over the four tray coach bolts
3. Position the legs over the same bolts, as shown and fit nuts.
4. To attach the front stays, position the two front stays, with the right angle bend to the top and facing to the rear, over the bolts and fit nuts.
5. To fit the wheel, slide the axle through the wheel bearing and slide an axle spacer, with notch facing away from the wheel, onto either side. Hold the wheel inside the nose guard of the handle frame with the axle positioned so that the "U" bolts can be fitted into handle frame. Position the front stays over the front most leg of the "U" bolt; rotate axle spacer so that the notch sits against the handle frame and fit nut. Fit nut to the other leg of "U" bolt.
6. Attach the cross braces to the rear of the legs with the hexagon head bolts and nuts, spreading the legs wide apart to position the cross braces.
7. At this point the Wheelbarrow should be completely assembled and only requires the nuts to be tightened. Start by positioning the wheel in the centre, and tighten the "U" bolt nuts. Work from the front of the Wheelbarrow to the rear.

**YOU HAVE NOW COMPLETED THE ASSEMBLY OF YOUR GREENS POLY CONTRACTOR BARROW. WE TRUST THIS PROVIDES YOU WITH YEARS OF PRACTICAL USE.  
MANY THANKS**

## 5 YEAR WARRANTY- DOMESTIC USE

Your Greens Poly Contractor wheelbarrow is guaranteed for 5 years against faulty workmanship and materials only when used for domestic purposes. The cartage of heavy building materials will render the warranty void. Warranty excludes normal wear and tear and abuse. Manufacturers liability does not cover any colour change or fading to the tray, handgrips, wheel or tyre that may occur.

Any claims should be made in writing to the address below along with valid proof of purchase receipt. Liability is limited to the replacement of parts only.



Riverlea Group Ltd  
P.O. Box 11062, Hamilton 3251, New Zealand  
Ph +64 (7) 847 0204, Fx +64 (7) 847 0205  
E-mail sales@riverleagroup.co.nz

Legs	
Front Stays	
Cross Stays	
Hardware Pack	
Axle	
Wheel	

Packed by:	Date:
------------	-------